

Nomad DTV Analyzer

Intelligent Mobile DTV Analyzer



System

The **only** intelligent mobile receiver-analyzer, featuring up to 4 simultaneous channel recording with real-time service quality and propagation analysis.

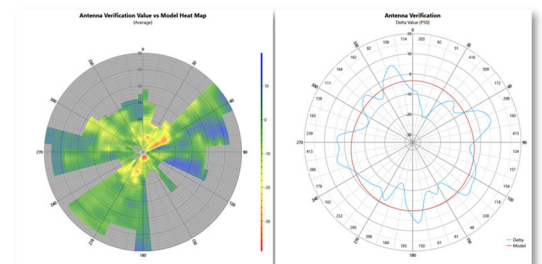
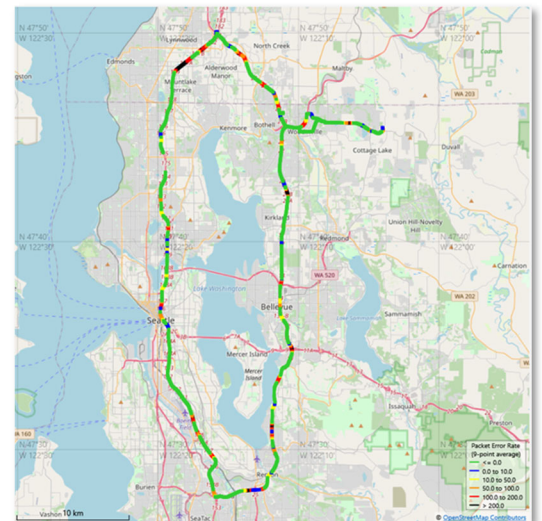
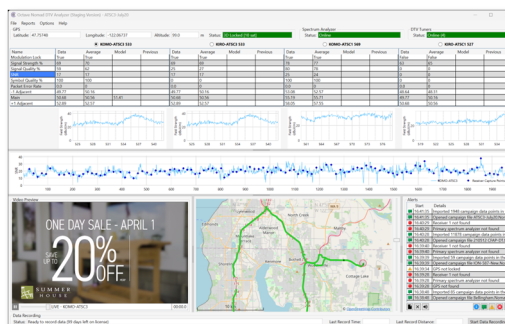
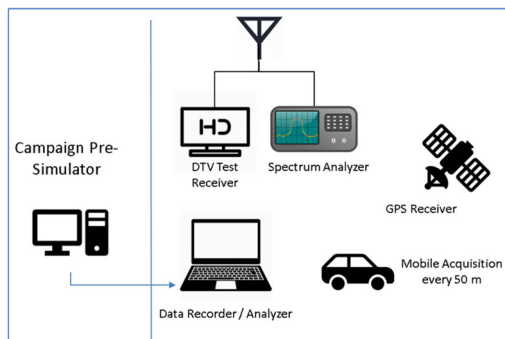
Specifications

- Analysis of ATSC 1.0 and 3.0 coverage and parameters.
- Record power levels of the main station, as well as the 1st adjacent frequencies.
- Easy recording of static data points (ATSC 1.0) or full mobile acquisition (ATSC 3.0) for different DTV metrics, including: modulation lock, SNR, Carrier Offset, TS Error Count and Symbol Quality using a HDHomeRun Flex 4K™ receiver.
- Get instant feedback on the road with customizable metric-based audible alarms, available in three languages (English, Spanish and French).
- Real-time service quality analysis comparison with propagation models like Longley-Rice and CRC-Predict.
- Campaign comparison to test different hardware transmission setup or to test SFN repeaters..
- Archival of Video stream that can be cross-referenced with the recorded data.

Report Generation

- Generate reports to Excel CSV, Google Earth KML or Open Street Map PNG files.
- Compare campaign data with the CRC-Predict or Longley-Rice propagation models.
- Typical evaluation:
 - ATSC 1.0 and 3.0 Coverage
 - SFN (ATSC 3.0) mobile synchronization evaluation
 - Potential interferers detection
 - Antenna pattern validation (Horizontal and Vertical components)

Available for turn-key measurements and analysis of your station



Octave Communications

130 Lallier St
Granby, QC
CANADA J2H 0R2

17659 202nd PI NE
Woodinville, WA
USA 98077

Phone: 579-365-3295
Email: info@octavecom.com
www.octavecom.com